

**DRAFT**

ORDINANCE NO. \_\_\_\_\_

**AN ORDINANCE OF THE CITY OF BUNKER HILL VILLAGE, TEXAS, AMENDING APPENDIX “A” OF THE CODE OF ORDINANCES OF THE CITY, SAME BEING THE COMPREHENSIVE ZONING ORDINANCE OF SAID CITY, BY GRANTING A SPECIFIC USE PERMIT FOR CONSTRUCTION AND USE OF PICKLE BALL COURTS, A PAVILION, FENCING AND ASSOCIATED LIGHTING ON THE PREMISES OF MEMORIAL DRIVE PRESBYTERIAN CHURCH, AND OTHER INCIDENTAL IMPROVEMENTS; PROVIDING FOR REPEAL; PROVIDING A PENALTY OF AN AMOUNT NOT TO EXCEED \$2000 FOR EACH DAY OF VIOLATION OF ANY PROVISION HEREOF; AND PROVIDING FOR SEVERABILITY.**

\* \* \* \* \*

**WHEREAS**, Section 8.02 of Appendix “A” of the Code of Ordinances of the City of Bunker Hill Village, Texas, Appendix “A” being the comprehensive zoning ordinance of the City, permits the construction and use of buildings and structures for churches and other places of religious worship only pursuant to a specific use permit granted in accordance with Article VIII of said Appendix “A”; and

**WHEREAS**, Memorial Drive Presbyterian Church has applied for a specific use permit for the construction and use of pickle ball courts, a pavilion, fencing, and lighting on its premises located at 11612 Memorial Drive within the City, in accordance with the plan attached hereto as Exhibits "A-1," "A-2," "B-1," and "B-2" and made a part hereof; and

**WHEREAS**, the Zoning Commission of the City, after notice and hearing as required by law, has recommended that the City Council grant the specific use permit subject to the terms and conditions contained in the final report of the Commission; and

**WHEREAS**, the City Council, following notice and hearing as required by law, concurs with the recommendation of the Zoning Commission that such specific use permit should be granted; now, therefore:

**BE IT ORDAINED BY THE CITY COUNCIL OF THE CITY OF BUNKER HILL VILLAGE, TEXAS:**

**Section 1.** A specific use permit authorizing construction and use of pickle ball courts, a pavilion, related lighting, fencing and incidental improvements, to be located on the premises of Memorial Drive Presbyterian Church, 11612 Memorial Drive, Bunker Hill Village, Texas, is hereby granted in accordance with the plans attached hereto as Exhibits “A-1,” “A-2,” “B-1” and “B-2” and in accordance with and subject to the special terms and conditions set forth in Section 2 of this Ordinance. Exhibits “A-1,” “A-2,” “B-1” and “B-2” are hereby made a part of this Ordinance for all purposes.

**Section 2.** The granting of the Specific Use Permit as set forth in Section 1 above is subject to the following additional terms and conditions:

A. **Hours of Operation.** The hours of operation of the pickle ball courts, pavilion and related area shall be 8:00 a.m. to 10:00 p.m. and may operate 7 days a week throughout the year. The security gates demonstrated on Exhibit “A-2” shall be locked when the courts and pavilion are not in use.

B. **Lighting.** All lighting shall comply with the lighting study and light fixture specifications attached hereto in Exhibits “C-1” and “C-2”. The pickle ball courts and pavilion shall be illuminated only from dusk until 10:00 p.m.

C. **Amplified Sound.** Amplified sound at the pickle ball courts and pavilion is hereby prohibited.

**Section 3.** **Repeal.** All ordinances or parts of ordinances inconsistent or in conflict herewith are, to the extent of such inconsistency or conflict, hereby repealed.

**Section 4.** **Penalty.** Any person who shall violate any provision of this Ordinance shall be deemed guilty of a misdemeanor and, upon conviction, shall be fined in an amount not to exceed \$2,000.00. Each day of violation shall constitute a separate offense.

**Section 5.** **Severability.** In the event any section, paragraph, subdivision, clause, phrase, provision, sentence, or part of this Ordinance or the application of the same to any person or circumstance shall for any reason be adjudged invalid or held unconstitutional by a court of competent jurisdiction, it shall not affect, impair, or invalidate this Ordinance as a whole or any part or provision hereof other than the part declared to be invalid or unconstitutional; and the City

Council of the City of Bunker Hill Village, Texas, declares that it would have passed each and every part of the same notwithstanding the omission of any such part thus declared to be invalid or unconstitutional, or whether there be one or more parts.

PASSED, APPROVED, AND ORDAINED this \_\_\_\_ day of \_\_\_\_\_, 2023.

\_\_\_\_\_  
Robert P. Lord, Mayor

ATTEST:

\_\_\_\_\_  
Gerardo Barrera, Acting City Secretary

EXHIBIT A-1

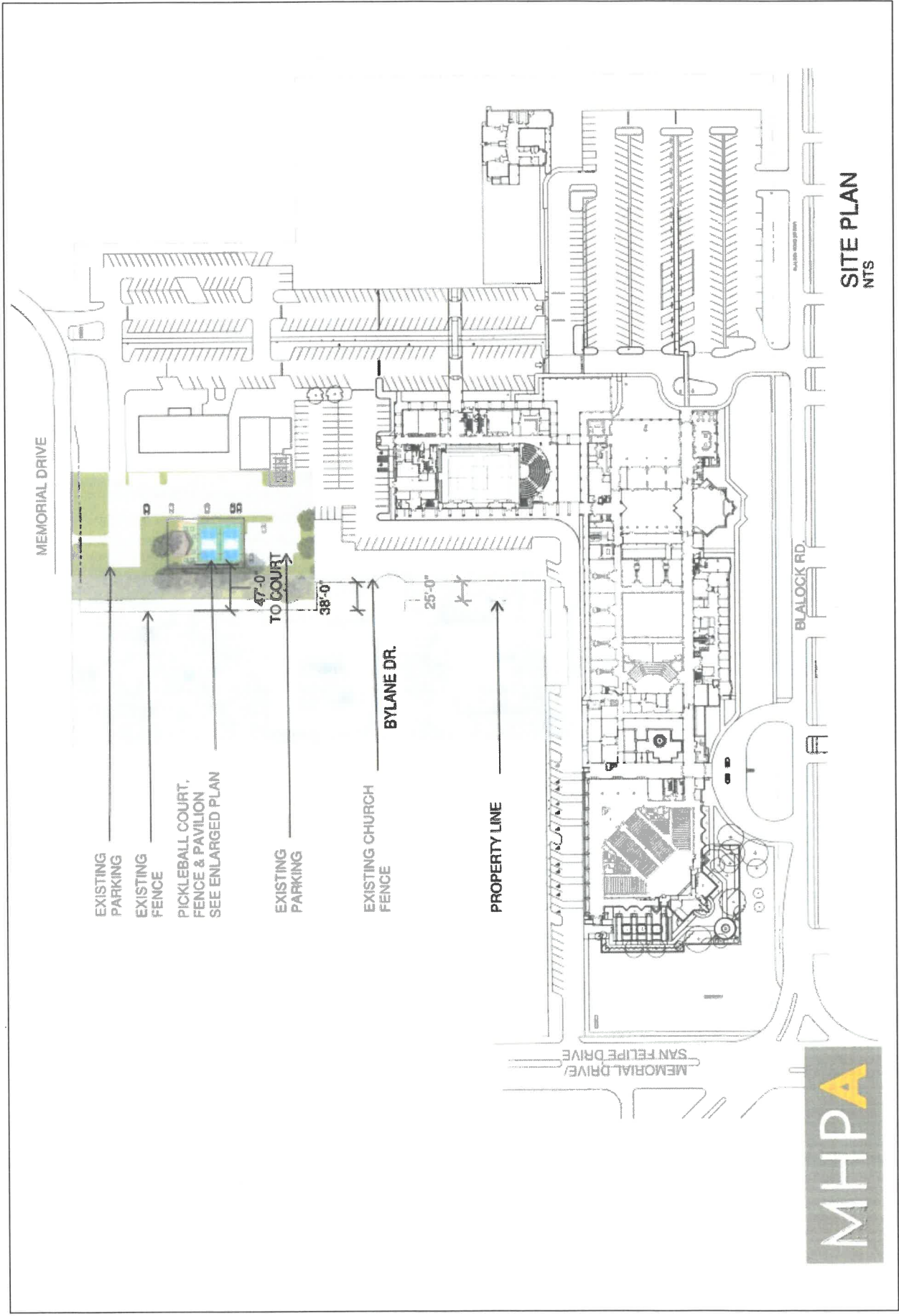
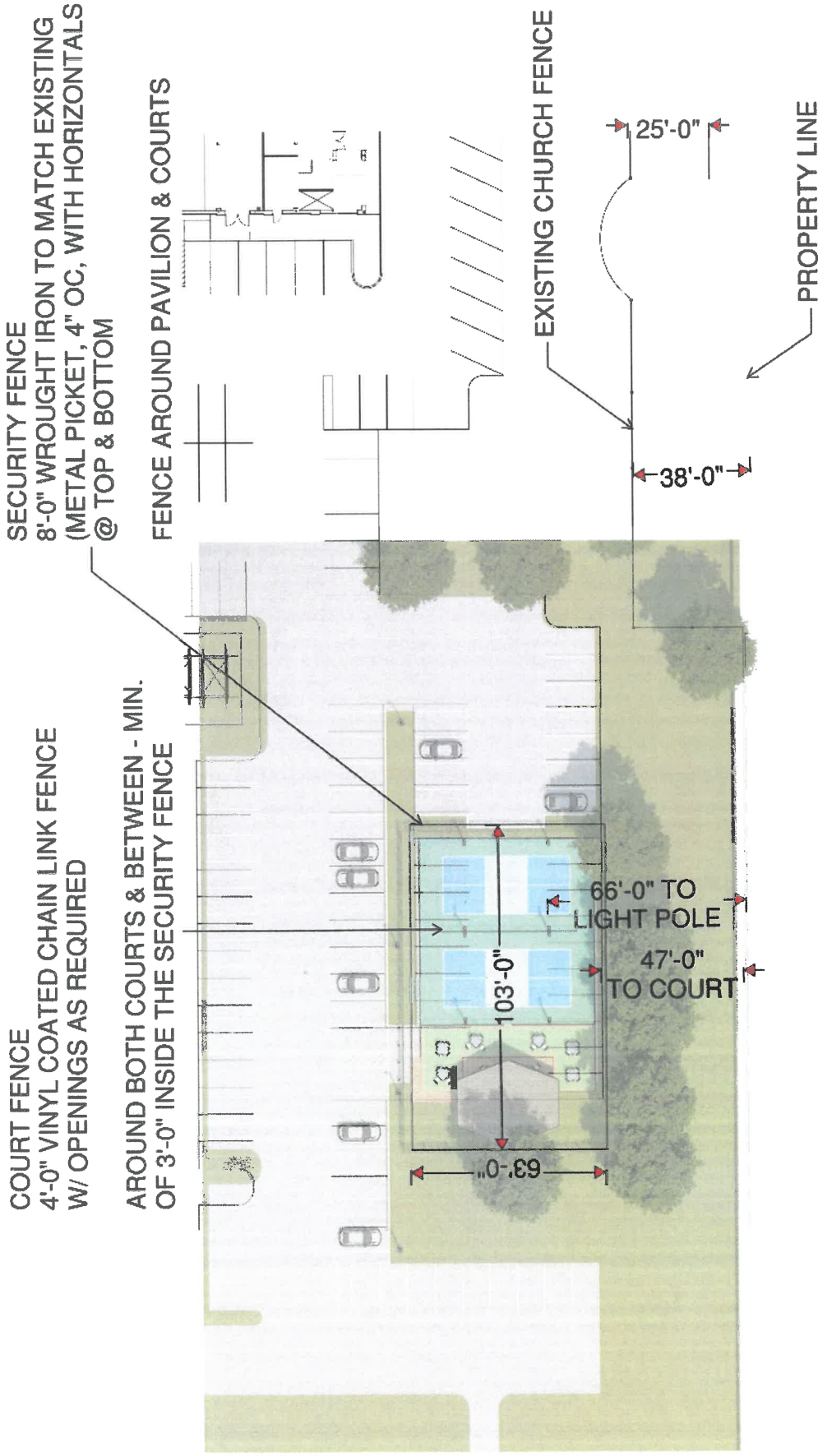


EXHIBIT A-2



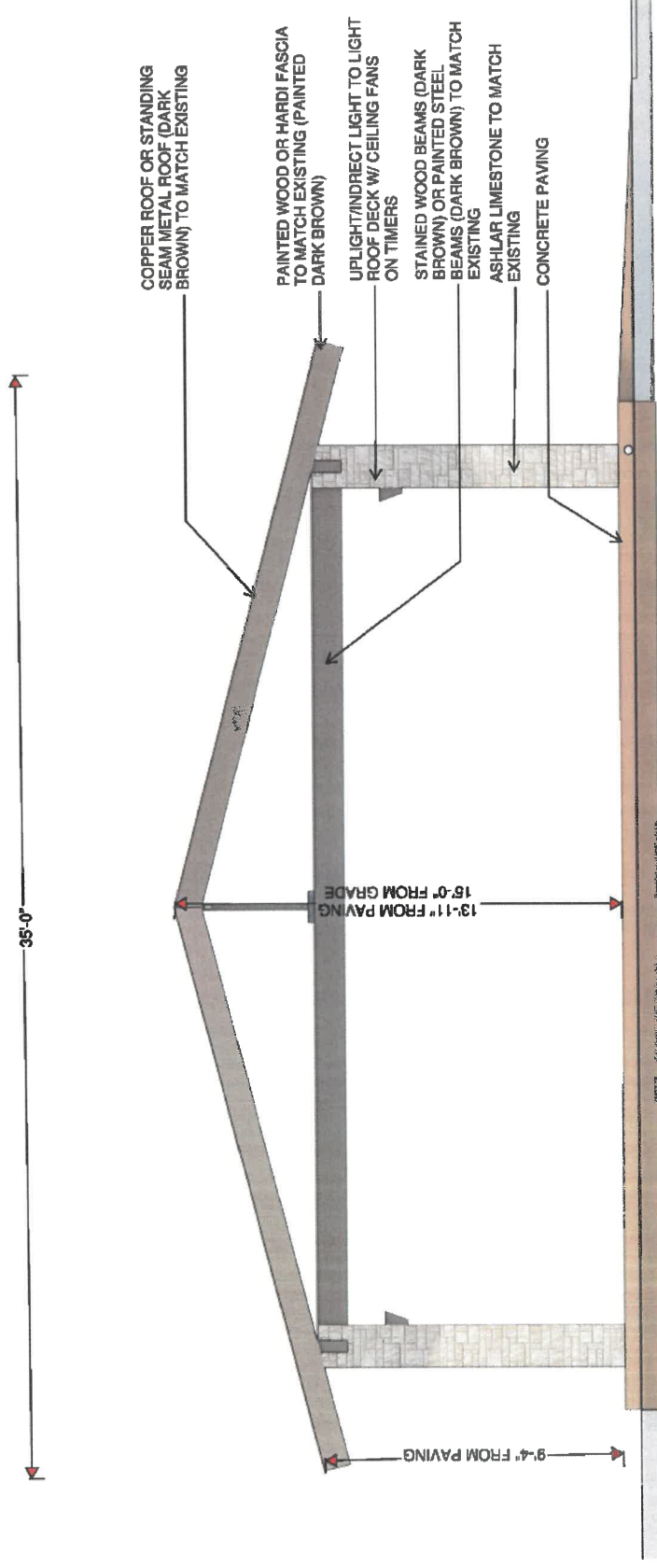
USERS: 50 IN THE PAVILION WITH 8 PLAYERS

NOTE: HOURS OF OPERATION - 8:00 AM TO 10:00 PM  
LIGHTING FROM DUSK TO 10:00 PM AND SECURITY  
GATES WILL BE LOCKED

ENLARGED SITE PLAN  
1:30

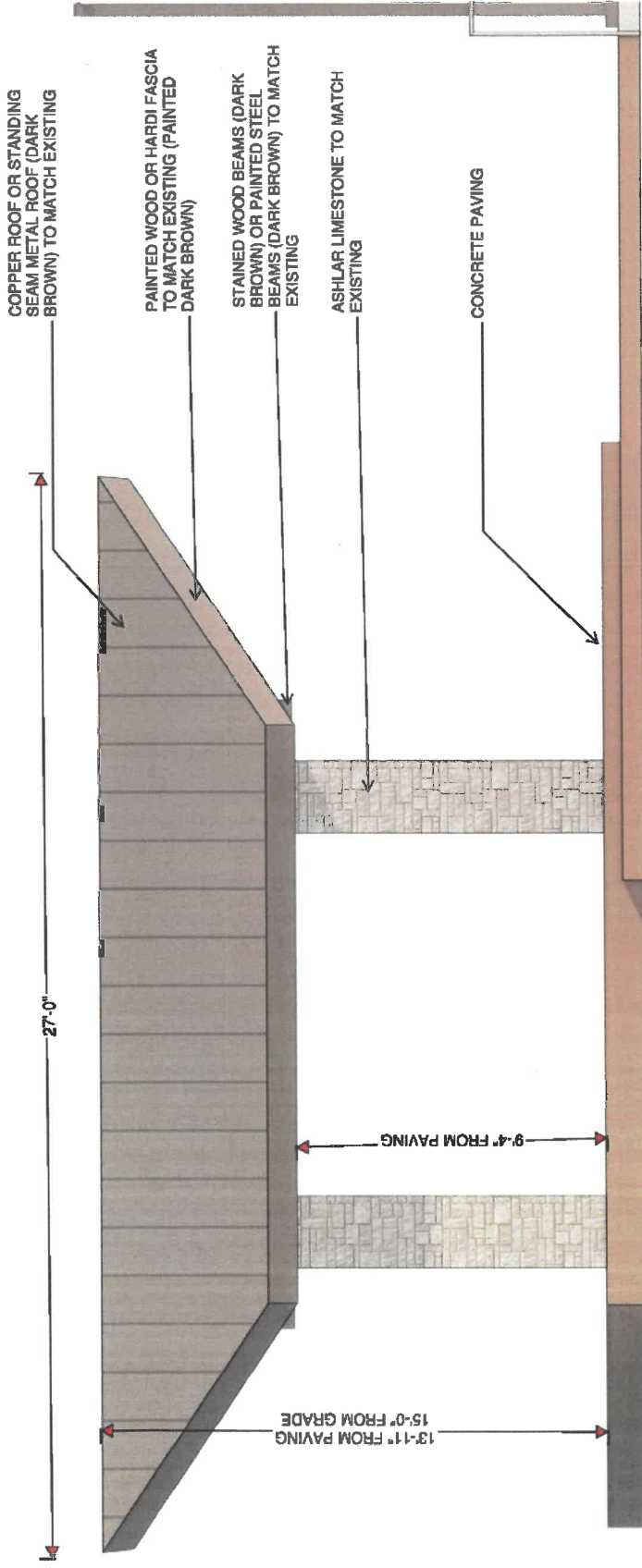


EXHIBIT B-1



PAVILION FRONT ELEVATION  
NTS

EXHIBIT B-2



PAVILION SIDE ELEVATION  
NTS



EXHIBIT C-1



MPPC  
PICKLE BALL COURT

Designer: MPPA  
Date: 4/23/2023  
Scale: AS NOTED  
Drawing No.:  
Summary:

1 of 1

12'-0" POLES  
W/ HEADS,  
SEE  
CUTSHEET

POLES TO  
BE BRONZE  
TO MATCH  
EXISTING

HOURS OF  
OPERATION  
DUSK UNTIL  
10:00 PM

Symbol	Label	Manufacturer	Catalog Number	Weight	Quantity	Unit	Material	Notes
107	107	107	107	107	107	107	107	107
108	108	108	108	108	108	108	108	108
109	109	109	109	109	109	109	109	109
110	110	110	110	110	110	110	110	110
111	111	111	111	111	111	111	111	111
112	112	112	112	112	112	112	112	112
113	113	113	113	113	113	113	113	113
114	114	114	114	114	114	114	114	114
115	115	115	115	115	115	115	115	115
116	116	116	116	116	116	116	116	116
117	117	117	117	117	117	117	117	117
118	118	118	118	118	118	118	118	118
119	119	119	119	119	119	119	119	119
120	120	120	120	120	120	120	120	120
121	121	121	121	121	121	121	121	121
122	122	122	122	122	122	122	122	122
123	123	123	123	123	123	123	123	123
124	124	124	124	124	124	124	124	124
125	125	125	125	125	125	125	125	125
126	126	126	126	126	126	126	126	126
127	127	127	127	127	127	127	127	127
128	128	128	128	128	128	128	128	128
129	129	129	129	129	129	129	129	129
130	130	130	130	130	130	130	130	130
131	131	131	131	131	131	131	131	131
132	132	132	132	132	132	132	132	132
133	133	133	133	133	133	133	133	133
134	134	134	134	134	134	134	134	134
135	135	135	135	135	135	135	135	135
136	136	136	136	136	136	136	136	136
137	137	137	137	137	137	137	137	137
138	138	138	138	138	138	138	138	138
139	139	139	139	139	139	139	139	139
140	140	140	140	140	140	140	140	140
141	141	141	141	141	141	141	141	141
142	142	142	142	142	142	142	142	142
143	143	143	143	143	143	143	143	143
144	144	144	144	144	144	144	144	144
145	145	145	145	145	145	145	145	145
146	146	146	146	146	146	146	146	146
147	147	147	147	147	147	147	147	147
148	148	148	148	148	148	148	148	148
149	149	149	149	149	149	149	149	149
150	150	150	150	150	150	150	150	150

Statistics	Symbol	Avg	Max	Min	Max/Min	Avg/Min
Count (All)	+	21.6	33.8	13.0	2.52	1.65
Count (Pole)	+	21.6	33.8	13.0	2.52	1.65
Count (Light)	+	82.6	24.16	0.75	419.2	11.71

Schedule	Label	Manufacturer	Catalog Number	Weight
+	P	COOPER LIGHTING	GPC 542D 740 U PART HSK	129

Plan View



Project		Catalog #		Type	
Prepared by		Notes		Date	



## McGraw-Edison

### GPC Galleon Pedestrian Companion

Area / Site Luminaire

#### Product Features



#### Product Certifications



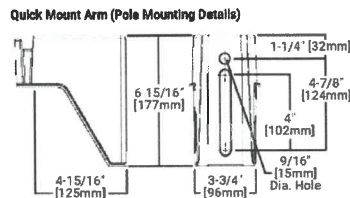
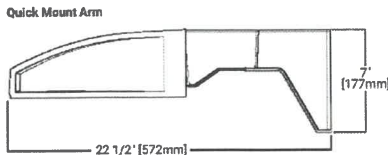
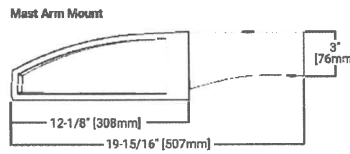
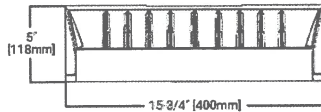
#### Interactive Menu

- Ordering Information [page 2](#)
- Product Specifications [page 2](#)
- Optical Configurations [page 3](#)
- Energy and Performance Data [page 4](#)
- Control Options [page 6](#)

#### Quick Facts

- Choice of sixteen high-efficiency, patented AccuLED Optics
- Quick mount pole or mast-arm mounting configurations
- Eight lumen packages from 3,215 up to 17,056 lumens
- IP66 rated housing and LED light squares

#### Dimensional Details



#### EPA

Effective Projected Area (Sq. Ft.)	
Quick Mount Arm	0.73
Mast Arm	0.62

#### Weight

Approximate Net Weight
27 lbs. (12.2 kgs.)

NOTES:  
 1. Visit <https://www.dlc.com/lighting/qualifications> to confirm qualification. Not all product variations are DLC qualified.  
 2. IDA Certified for 3000K CCT and warmer only.

**McGraw-Edison** **GPC Galleon Pedestrian Companion**

**Ordering Information**

SAMPLE NUMBER: GPC-SA2C-740-U-T4FT-GM

Product Family	Light Engine		Color Temperature	Voltage	Distribution	Mounting Options	Finish
	Configuration	Drive Current					
GPC-Galleon Pedestrian Companion BAA-GPC-Galleon Pedestrian Companion, Buy American Act Compliant <sup>34</sup> TAA-GPC-Galleon Pedestrian Companion, Trade Agreements Act Compliant <sup>34</sup>	SA1=1 Square SA2=2 Squares <sup>4</sup>	A=615mA B=800mA C=1000mA D=1200mA <sup>4</sup>	722=70CRI, 2200K 727=70CRI, 2700K 730=70CRI, 3000K 735=70CRI, 3500K 740=70CRI, 4000K 750=70CRI, 5000K 760=70CRI, 6000K 827=80CRI, 2700K 830=80CRI, 3000K AMB=Amber, 590nm <sup>4,5</sup>	U=120-277V 1=120V 2=208V 3=240V 4=277V 8=480V <sup>4,7</sup> 9=347V <sup>4</sup> DV=277-480V DuraVolt Drivers <sup>24,28</sup>	T2=Type II T2R=Type II Roadway T3=Type III T3R=Type III Roadway T4FT=Type IV Forward Throw T4W=Type IV Wide SL2=Type II w/Spill Control SL3=Type III w/Spill Control SL4=Type IV w/Spill Control SL=90° Spill Light Eliminator Left SLR=90° Spill Light Eliminator Right RW=Rectangular Wide Type I SWQ=Type V Square Narrow SMQ=Type V Square Medium SWQ=Type V Square Wide AFL=Automotive Frontline	QM=Quick Mount Arm for Round or Square Pole <sup>1,2</sup> MA=2-3/8" Mast Arm <sup>4,14</sup>	AP=Grey BZ=Bronze BK=Black DP=Dark Platinum GM=Graphite Metallic WH=White
Options (Add as Suffix) <sup>1</sup>		Controls and Systems Options (Add as Suffix)		Accessories (Order Separately) <sup>25</sup>			
F=Single Fused (120, 277 or 347V. Must Specify Voltage) FF=Double Fused (208, 240 or 480V. Must Specify Voltage) 10K=10kV Surge Module 20K=20kV UL 1449 Fused Surge Protective Device DIM=External 0-10V Dimming Leads <sup>8,9</sup> L90=Optics Rotated 90° Left R90=Optics Rotated 90° Right HSS=Factory Installed House Side Shield <sup>15</sup> GRBK=Factory Installed Glare Shield, BK <sup>4,27</sup> GRWH=Factory Installed Glare Shield, WH <sup>4,27</sup> UPL=Uplight Housing <sup>15</sup> HA=50°C High Ambient <sup>15</sup> LCP=Light Square Trim Plate Painted to Match Housing <sup>22</sup> MFT=Factory Installed Mesh Top CC=Coastal Construction finish <sup>4</sup> CE=CE Marking and Small Terminal Block <sup>24</sup> AHD145=After Hours Dim, 5 Hours <sup>16</sup> AHD245=After Hours Dim, 6 Hours <sup>16</sup> AHD355=After Hours Dim, 7 Hours <sup>16</sup> AHD395=After Hours Dim, 8 Hours <sup>16</sup> DALI=DALI Driver <sup>11</sup>		BPC=Button Type Photocontrol (120, 208, 240 or 277V. Must Specify Voltage) PR=NEMA 3-PIN Twistlock Photocontrol Receptacle PR7=NEMA 7-PIN Twistlock Photocontrol Receptacle <sup>24</sup> FADC=Field Adjustable Dimming Controller <sup>27</sup> SPB1=Dimming Occupancy Sensor with Bluetooth Interface, <8' Mounting <sup>19,21</sup> SPB2=Dimming Occupancy Sensor with Bluetooth Interface, 8'-20' Mounting <sup>19,21</sup> SPB4=Dimming Occupancy Sensor with Bluetooth Interface, 21'-40' Mounting <sup>19,21</sup> MS=LiX-Motion Sensor for On/Off Operation <sup>19,21,30</sup> MS/DIM=LiX-Motion Sensor for Dimming Operation <sup>19,21,30</sup> ZW=WaveLinx-enabled 4-PIN Twistlock Receptacle <sup>24,29</sup> ZD=WaveLinx Module with DALI driver and 4-PIN Receptacle <sup>24,29</sup> SWPD4XX=WaveLinx Sensor Only, 7'-15' <sup>24,29</sup> SWPD5XX=WaveLinx Sensor Only, 15'-40' <sup>24,29</sup> WOFXX=WaveLinx Sensor with Bluetooth, 7'-15' <sup>24,29</sup> WOFXX=WaveLinx Sensor with Bluetooth, 15'-40' <sup>24,29</sup> LWR-LW=Enlightened Wireless Sensor, Wide Lens for 6'-16' Mounting Height <sup>19,26,21</sup> LWR-LN=Enlightened Wireless Sensor, Narrow Lens for 16'-40' Mounting Height <sup>19,26,21</sup>		OA/RA1013=Photocontrol Shorting Cap <sup>24</sup> OA/RA1016=NEMA Photocontrol - Multi-Tap 105-285V <sup>24</sup> OA/RA1201=NEMA Photocontrol - 347V <sup>24</sup> OA/RA1027=NEMA Photocontrol - 480V <sup>24</sup> MA1252=10kV Circuit Module Replacement MA105923=Thin-Branch Back Box (Must Specify Color) LS/HSS=Field Installed House Side Shield <sup>15,23</sup> LS/GRBK=2PK-Glare Shield, Black <sup>4,23,27</sup> LS/GRWH=2PK-Glare Shield, White <sup>4,23,27</sup> LS/PPF3=Perimeter Shield, Black FEB=100-Wireless Configuration Tool for Occupancy Sensor <sup>27</sup> WOLC-7P-10A=WaveLinx Outdoor Control Module (7-pin) <sup>24,29</sup> SWPD4-XX=WaveLinx Wireless Sensor, 7' - 15' Mounting Height <sup>24,26,21,22</sup> SWPD5-XX=WaveLinx Wireless Sensor, 15' - 40' Mounting Height <sup>24,26,21,22</sup>			
<b>NOTES:</b> 1. DesignLight Consortium® Qualified. Refer to www.designlights.org. Qualified Products List under Family Models for details. 2. Customer is responsible for engineering analysis to confirm pole and fixture compatibility for all applications. Refer to our white paper WP613001EN for additional information. 3. Narrow-band 590nm +/- 5nm for wildlife and observatory use. Choose drive current A; supplied at 600mA drive current only. Available with SWQ, SMQ, SL2, SL3 and SL4 distributions. Can be used with HSS option. 4. Not available with HA option. 5. Coastal construction finish salt sprayed tested to over 5,000-hours per ASTM B117, with a scribe rating of 9 per ASTM D1654. 6. Require the use of step down transformer. Not available in combination with sensor options at 1200mA. 7. 480V not to be used with ungrounded or impedance grounded systems. 8. DuraVolt drivers feature added protection from power quality issues such as loss of neutral, transients and voltage fluctuations. Visit <a href="http://www.sigalfy.com/duravolt">www.sigalfy.com/duravolt</a> for more information. 9. Cannot be used with other control options. 10. Low voltage control leads extended 18" from fixture. 11. Not available in 1200mA. When used with CBP or HA options, only available with single light square. 12. Not available in 1200mA, UPL or CBP options. Available with single light square. 13. Quick mount arm adapter is factory installed. Pole mounting bracket shipped in box. Suitable for 1.5G. Fits square and round poles up to 6" O.D. 14. Mast arm adapter factory installed (2-3/8" O.D. arm only). Suitable for 3G vibration. 15. Compatible with standard 3-PIN photocontrols, 5-PIN or 7-PIN ANSI controls. 16. Requires the use of BPC photocontrol or the PR7 or PR photocontrol receptacle with photocontrol accessory. See After Hours Dim supplemental guide for additional information. 17. The FSR-100 configuration tool is required to adjust parameters such as high and low modes, sensitivity, time delay and cutoff. Consult your lighting representative at Cooper Lighting Solutions for more information. 18. Replace LX4 with LD8 (<8' mounting), L20 (8'-20' mounting) or L40W (21'-40' mounting). 19. Includes integral photosensor. 20. Enlighted wireless sensors are factory installed requiring network components in appropriate quantities. 21. Bronze sensor is shipped with Bronze fixtures. White sensor shipped on all other housing color options. 22. Not available with HSS or GRB options. 23. Not for use with SMQ, 5MQ, 5WQ or RW optics. The light square trim plate is painted black when the HSS option is selected. 24. CE is not available with the 1200, DALI, LWR, MS, MS/DIM, BPC, PR or PR7 options. Available in 120-277V only. 25. One required for each light square. 26. Requires PR7. 27. Not for use with T4FT, T4W or SL4 optics. 28. Cannot be used in conjunction with additional photocontrol or other controls systems (BPC, PR, PR7, MS, LWR). 29. WAC Gateway required to enable field-configurability: Order WAC-PoE and WPOE-120 (10V to PoE injector) power supply if needed. 30. Requires ZW or ZD receptacle. 31. Replace XX with sensor color (WH, BZ, or BK). 32. Smart device with mobile application required to change system defaults. See controls section for details. 33. Only product configurations with these designated prefixes are built to be compliant with the Buy American Act of 1933 (BAA) or Trade Agreements Act of 1979 (TAA), respectively. Please refer to <a href="http://domestic.preferences">DOMESTIC.PREFERENCES</a> website for more information. Components shipped separately may be separately analyzed under domestic preference requirements. 34. For BAA or TAA requirements, Accessories sold separately will be separately analyzed under domestic preference requirements. Consult factory for further information. 35. Not available in 1 square configuration at 800mA or below. Not available with any control option except SPB. 36. Cannot be used with PR7 or other motion response control options.							

**Product Specifications**

- Construction**
- Driver enclosure thermally isolated from optics for optimal thermal performance
  - Die-cast aluminum heat sinks
  - IP66 rated housing
  - 1.5G vibration rated

- Optics**
- Patented, high-efficiency injection-molded AccuLED Optics technology
  - 13 optical distributions
  - Dark Sky Approved (3000K CCT and warmer only)

- Electrical**
- LED driver assembly mounted for ease of maintenance
  - Standard with 0-10V dimming
  - Optional 10kV or 20kV surge module
  - Suitable for operation in -40C to 40C ambient environments. Optional 50C high ambient (HA) configuration.

- Mounting**
- Gasketed and zinc plated rigid steel mounting attachment
  - "Hook-N-Lock" mechanism for easy installation

- Finish**
- Housing finished in super durable TGIC polyester powder coat paint, 2.5 mil nominal thickness
  - Heat sink is powder coated black
  - RAL and custom color matches available
  - Coastal Construction (CC) option available

- Typical Applications**
- Outdoor, Parking Lots, Walkways, Roadways, Building Areas

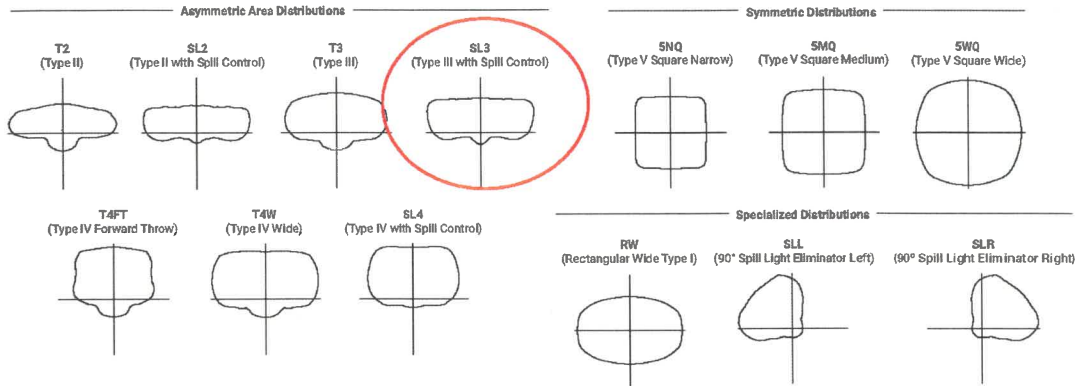
- Warranty**
- Five-year warranty



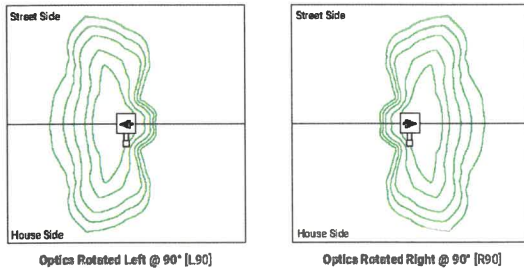
McGraw-Edison

GPC Galleon Pedestrian Companion

Optical Distributions



Optic Orientation



Energy and Performance Data

Lumen Multiplier

Ambient Temperature	Lumen Multiplier
0°C	1.02
10°C	1.01
25°C	1.00
40°C	0.99
50°C	0.97

FADC Settings

FADC Position	Lumen Multiplier
1	25%
2	46%
3	55%
4	62%
5	72%
6	77%
7	82%
8	85%
9	90%
10	100%

Lumen Maintenance

Drive Current	Ambient Temperature	TM-21 Lumen Maintenance (60,000 Hours)	Projected L70 (Hours)
Up to 1A	Up to 50°C	> 95%	> 416,000
1.2A	Up to 40°C	> 90%	> 205,000

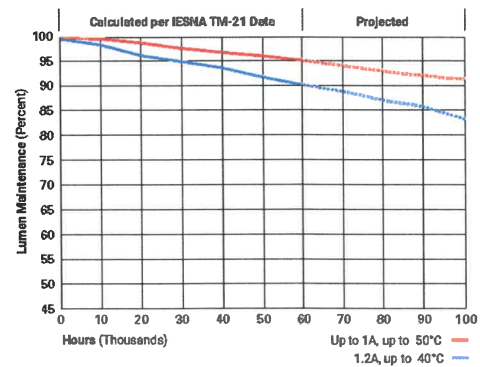


EXHIBIT C-2

McGraw-Edison

GPC Galleon Pedestrian Companion

Energy and Performance Data

[View GPC Galleon Pedestrian IES files](#)

4000K/5000K/6000K CCT, 70 CRI

Number of Light Squares		1				2			
Drive Current	615mA	800mA	1050mA	1.2A	615mA	800mA	1050mA	1.2A	
Nominal Power (Watts)	34	44	59	67	66	86	113	129	
Input Current @ 120V (A)	0.30	0.39	0.51	0.58	0.58	0.77	1.02	1.16	
Input Current @ 208V (A)	0.17	0.22	0.29	0.33	0.34	0.44	0.56	0.63	
Input Current @ 240V (A)	0.15	0.19	0.26	0.29	0.30	0.38	0.48	0.55	
Input Current @ 277V (A)	0.14	0.17	0.23	0.25	0.28	0.36	0.42	0.48	
Input Current @ 347V (A)	0.11	0.15	0.17	0.20	0.19	0.24	0.32	0.39	
Input Current @ 480V (A)	0.08	0.11	0.14	0.15	0.15	0.18	0.24	0.30	
<b>Optics</b>									
T2	Lumens	4,883	5,989	7,412	8,131	9,543	11,703	14,485	15,891
	BUG Rating	B1-U0-G1	B1-U0-G2	B1-U0-G2	B1-U0-G2	B2-U0-G2	B2-U0-G2	B2-U0-G3	B2-U0-G3
	Lumens per Watt	144	136	126	121	145	136	128	123
T3	Lumens	4,978	6,105	7,556	8,288	9,729	11,929	14,764	16,196
	BUG Rating	B1-U0-G1	B1-U0-G2	B1-U0-G2	B1-U0-G2	B2-U0-G2	B2-U0-G2	B2-U0-G2	B2-U0-G3
	Lumens per Watt	146	139	128	124	147	139	131	126
T4FT	Lumens	5,008	6,140	7,599	8,337	9,783	11,998	14,850	16,290
	BUG Rating	B1-U0-G2	B1-U0-G2	B1-U0-G3	B1-U0-G3	B2-U0-G3	B2-U0-G3	B2-U0-G3	B2-U0-G3
	Lumens per Watt	147	140	129	124	148	140	131	126
T4W	Lumens	4,942	6,060	7,502	8,229	9,658	11,843	14,658	16,080
	BUG Rating	B1-U0-G2	B1-U0-G2	B1-U0-G2	B2-U0-G2	B2-U0-G2	B2-U0-G2	B2-U0-G3	B3-U0-G3
	Lumens per Watt	145	138	127	123	146	138	130	125
SL2	Lumens	4,874	5,979	7,399	8,117	9,528	11,684	14,461	15,863
	BUG Rating	B1-U0-G2	B1-U0-G2	B1-U0-G2	B2-U0-G3	B2-U0-G3	B2-U0-G3	B2-U0-G3	B3-U0-G3
	Lumens per Watt	143	136	125	121	144	136	128	123
SL3	Lumens	4,976	6,104	7,555	8,287	9,727	11,927	14,763	16,194
	BUG Rating	B1-U0-G2	B1-U0-G2	B1-U0-G2	B1-U0-G3	B1-U0-G3	B2-U0-G3	B2-U0-G3	B2-U0-G3
	Lumens per Watt	146	139	128	124	147	139	131	126
SL4	Lumens	4,729	5,799	7,178	7,873	9,239	11,333	14,025	15,387
	BUG Rating	B1-U0-G2	B1-U0-G2	B1-U0-G3	B1-U0-G3	B1-U0-G3	B1-U0-G3	B2-U0-G4	B2-U0-G4
	Lumens per Watt	139	132	122	118	140	132	124	119
5WQ	Lumens	5,134	6,296	7,793	8,547	10,033	12,303	15,226	16,704
	BUG Rating	B2-U0-G1	B2-U0-G1	B3-U0-G1	B3-U0-G1	B3-U0-G1	B3-U0-G1	B3-U0-G2	B3-U0-G2
	Lumens per Watt	151	143	132	128	152	143	135	129
5MQ	Lumens	5,228	6,412	7,935	8,705	10,216	12,529	15,508	17,011
	BUG Rating	B3-U0-G1	B3-U0-G1	B3-U0-G2	B3-U0-G2	B3-U0-G2	B4-U0-G2	B4-U0-G2	B4-U0-G2
	Lumens per Watt	154	146	134	130	155	146	137	132
5WQ	Lumens	5,242	6,428	7,956	8,728	10,244	12,563	15,548	17,056
	BUG Rating	B3-U0-G1	B3-U0-G2	B3-U0-G2	B3-U0-G2	B4-U0-G2	B4-U0-G2	B4-U0-G2	B4-U0-G2
	Lumens per Watt	154	146	135	130	155	146	138	132
SLL/SLR	Lumens	4,373	5,365	6,640	7,283	8,547	10,481	12,973	14,231
	BUG Rating	B1-U0-G2	B1-U0-G2	B1-U0-G2	B1-U0-G3	B1-U0-G3	B2-U0-G3	B2-U0-G3	B2-U0-G3
	Lumens per Watt	129	122	113	109	130	122	115	110
RW	Lumens	5,087	6,238	7,721	8,472	9,941	12,190	15,088	16,553
	BUG Rating	B2-U0-G1	B3-U0-G1	B3-U0-G1	B3-U0-G1	B3-U0-G1	B3-U0-G2	B4-U0-G2	B4-U0-G2
	Lumens per Watt	150	142	131	126	151	142	134	128

\* Nominal lumen data for 70 CRI. BUG rating for 4000K/5000K. Refer to IES files for 3000K BUG ratings.

EXHIBIT C-2

**McGraw-Edison** **GPC Galleon Pedestrian Companion**

3000K CCT, 80 CRI

Number of Light Squares		1				2			
Drive Current		615mA	800mA	1050mA	1.2A	615mA	800mA	1050mA	1.2A
Nominal Power (Watts)		34	44	59	67	66	86	113	129
Input Current @ 120V (A)		0.30	0.39	0.51	0.58	0.58	0.77	1.02	1.16
Input Current @ 208V (A)		0.17	0.22	0.29	0.33	0.34	0.44	0.56	0.63
Input Current @ 240V (A)		0.15	0.19	0.26	0.29	0.30	0.38	0.48	0.55
Input Current @ 277V (A)		0.14	0.17	0.23	0.25	0.28	0.36	0.42	0.48
Input Current @ 347V (A)		0.11	0.16	0.17	0.20	0.19	0.24	0.32	0.39
Input Current @ 480V (A)		0.08	0.11	0.14	0.15	0.15	0.18	0.24	0.30
<b>Optics</b>									
T2	Lumens	3,880	4,769	5,890	6,461	7,583	9,300	11,510	12,628
	BUG Rating	B1-U0-G1	B1-U0-G1	B1-U0-G2	B1-U0-G2	B1-U0-G2	B1-U0-G2	B2-U0-G2	B2-U0-G3
	Lumens per Watt	114	108	100	96	115	108	102	98
T3	Lumens	3,956	4,851	6,004	6,586	7,731	9,479	11,732	12,870
	BUG Rating	B1-U0-G1	B1-U0-G1	B1-U0-G2	B1-U0-G2	B1-U0-G2	B2-U0-G2	B2-U0-G2	B2-U0-G2
	Lumens per Watt	116	110	102	98	117	110	104	100
T4FT	Lumens	3,980	4,879	6,038	6,625	7,774	9,534	11,800	12,945
	BUG Rating	B1-U0-G2	B1-U0-G2	B1-U0-G2	B1-U0-G2	B1-U0-G3	B2-U0-G3	B2-U0-G3	B2-U0-G3
	Lumens per Watt	117	111	102	99	118	111	104	100
T4W	Lumens	3,927	4,816	5,961	6,539	7,676	9,411	11,648	12,778
	BUG Rating	B1-U0-G1	B1-U0-G2	B1-U0-G2	B1-U0-G2	B2-U0-G2	B2-U0-G2	B2-U0-G2	B2-U0-G3
	Lumens per Watt	116	109	101	98	116	109	103	99
SL2	Lumens	3,873	4,761	5,880	6,450	7,571	9,285	11,491	12,605
	BUG Rating	B1-U0-G2	B1-U0-G2	B1-U0-G2	B1-U0-G2	B1-U0-G3	B2-U0-G3	B2-U0-G3	B2-U0-G3
	Lumens per Watt	114	108	100	96	115	108	102	98
SL3	Lumens	3,954	4,851	6,004	6,585	7,729	9,478	11,731	12,868
	BUG Rating	B1-U0-G2	B1-U0-G2	B1-U0-G2	B1-U0-G2	B1-U0-G2	B1-U0-G3	B2-U0-G3	B2-U0-G3
	Lumens per Watt	116	110	102	98	117	110	104	100
SL4	Lumens	3,758	4,608	5,704	6,256	7,342	9,006	11,145	12,227
	BUG Rating	B1-U0-G2	B1-U0-G2	B1-U0-G2	B1-U0-G3	B1-U0-G3	B1-U0-G3	B1-U0-G3	B1-U0-G3
	Lumens per Watt	111	105	97	93	111	105	99	95
5NQG	Lumens	4,080	5,003	6,193	6,792	7,973	9,776	12,099	13,274
	BUG Rating	B2-U0-G0	B2-U0-G1	B2-U0-G1	B2-U0-G1	B3-U0-G1	B3-U0-G1	B3-U0-G1	B3-U0-G2
	Lumens per Watt	120	114	105	101	121	114	107	103
5MQ	Lumens	4,154	5,095	6,305	6,917	8,118	9,956	12,323	13,518
	BUG Rating	B2-U0-G1	B3-U0-G1	B3-U0-G1	B3-U0-G1	B3-U0-G2	B3-U0-G2	B4-U0-G2	B4-U0-G2
	Lumens per Watt	122	116	107	103	123	116	109	105
5WQ	Lumens	4,166	5,108	6,322	6,936	8,140	9,983	12,355	13,553
	BUG Rating	B3-U0-G1	B3-U0-G1	B3-U0-G1	B3-U0-G2	B3-U0-G2	B4-U0-G2	B4-U0-G2	B4-U0-G2
	Lumens per Watt	123	116	107	104	123	116	109	105
SLL/SLR	Lumens	3,475	4,263	5,276	5,787	6,792	8,329	10,309	11,309
	BUG Rating	B1-U0-G2	B1-U0-G2	B1-U0-G2	B1-U0-G2	B1-U0-G3	B1-U0-G3	B2-U0-G3	B2-U0-G3
	Lumens per Watt	102	97	89	86	103	97	91	88
RW	Lumens	4,042	4,957	6,135	6,732	7,900	9,687	11,990	13,154
	BUG Rating	B2-U0-G1	B2-U0-G1	B3-U0-G1	B3-U0-G1	B3-U0-G1	B3-U0-G1	B3-U0-G2	B3-U0-G2
	Lumens per Watt	119	113	104	100	120	113	106	102

\* Nominal lumen data for 70 CRI. BUG rating for 4000K/5000K. Refer to IES files for 3000K BUG ratings.



**McGraw-Edison** **GPC Galleon Pedestrian Companion**

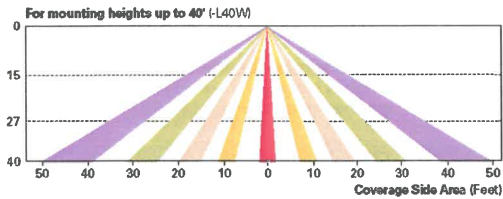
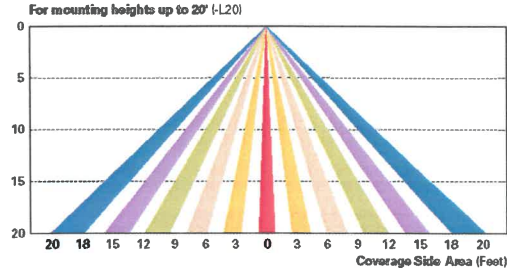
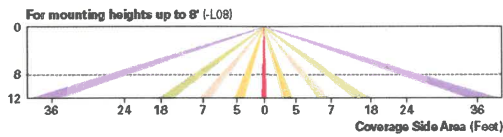
**Control Options**

**0-10V** This fixture is offered standard with 0-10V dimming driver(s). The DIM option provides 0-10V dimming wire leads for use with a lighting control panel or other control method.

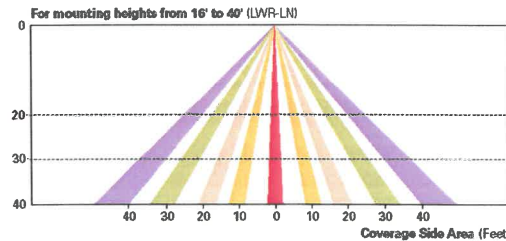
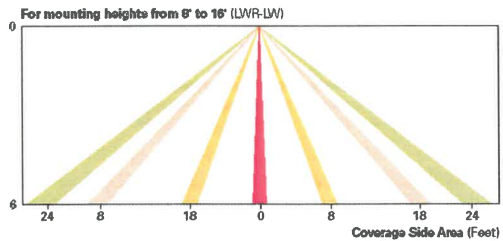
**Photocontrol (BPC, PR, and PR7)** Optional button-type photocontrol (BPC) and photocontrol receptacles (PR and PR7) provide a flexible solution to enable "dusk-to-dawn" lighting by sensing light levels. Advanced control systems compatible with NEMA 7-pin standards can be utilized with the PR7 receptacle.

**After Hours Dim (AHD)** This feature allows photocontrol-enabled luminaires to achieve additional energy savings by dimming during scheduled portions of the night. The dimming profile will automatically take effect after a "dusk-to-dawn" period has been calculated from the photocontrol input. Specify the desired dimming profile for a simple, factory-shipped dimming solution requiring no external control wiring. Reference the After Hours Dim supplemental guide for additional information.

**Dimming Occupancy Sensor (SPB, MS/DIM-LXX and MS-LXX)** These sensors are factory installed in the luminaire housing. When the SPB or MS/DIM sensor options are selected, the occupancy sensor is connected to a dimming driver and the entire luminaire dims when there is no activity detected. When activity is detected, the luminaire returns to full light output. The MS/DIM sensor is factory preset to dim down to approximately 50 percent power with a time delay of five minutes. The MS-LXX sensor is factory preset to turn the luminaire off after five minutes of no activity. SPB motion sensors require the Sensor Configuration mobile application by Wattsopper to change factory default dimming level, time delay, sensitivity and other parameters. Available for iOS and Android devices. The SPB sensor is factory preset to dim down to approximately 10% power with a time delay of five minutes. The MS/DIM occupancy sensors require the FSIR-100 programming tool to adjust factory defaults.



**Enlighted Wireless Control and Monitoring System (LWR-LW and LWR-LN)** The Enlighted control system is a connected lighting solution, combining LED luminaires with an integrated wireless sensor system. The sensor controls the lighting system in compliance with the latest energy codes while collecting valuable data about building performance and use. Software applications utilizing energy dashboards maximize data inputs to help optimize the use of other resources beyond lighting.



**WaveLinx Wireless Outdoor Lighting Control Module (WOLC-7P-10A)** The 7-pin wireless outdoor lighting control module enables WaveLinx to control outdoor area, site and flood lighting. WaveLinx controls outdoor lighting using schedules to provide ON, OFF and dimming controls based on astronomic or time schedules based on a 7 day week.