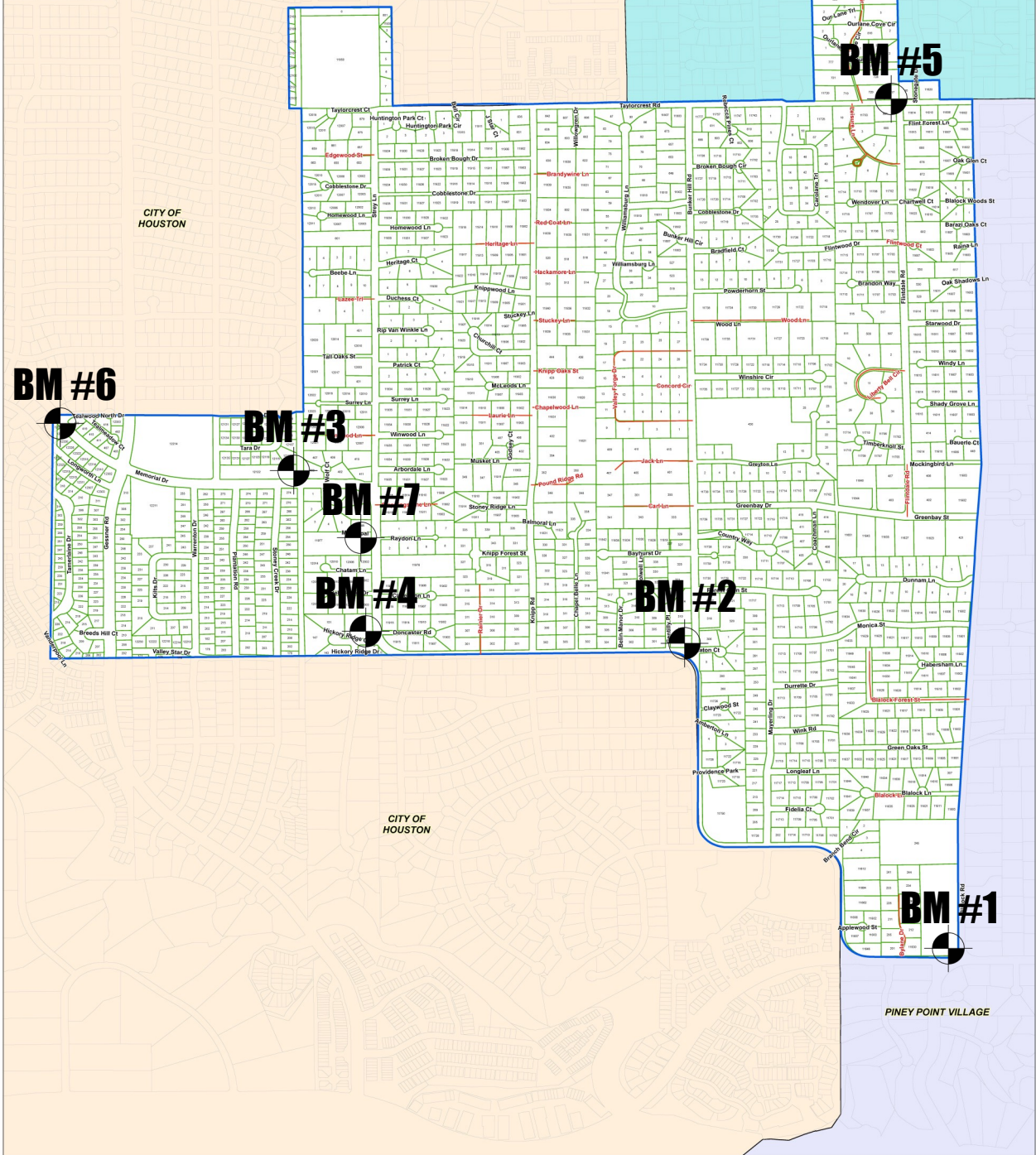


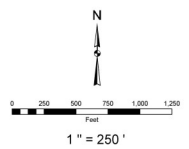
CITY OF BUNKER HILL VILLAGE

BENCHMARKS



Legend

- PRIVATE STREETS
- PUBLIC STREETS
- CITY LIMITS
- Parcel (HCAD)



JUNE 2014



CITY OF BUNKER HILL VILLAGE BENCHMARK SHEET

BENCHMARK NO. 1

GENERAL LOCATION: NORTHWEST CORNER OF MEMORIAL DRIVE & BLALOCK ROAD

Latitude: 29° 45' 04.464" N
Longitude: 95° 31' 22.656" W
Grid Northing: 13,837,096.05
Grid Easting: 3,071,626.67
State Plane Coordinates, Texas South Central
Zone (4204), NAD83.

ELEVATION: 67.42 NAVD88, 2001 Adj.

2" Brass Disk in Conc. Stamped "BM 1"
Surveyed April, 2020 Probsfeld & Associates

Horizontal positions were established using
GPS (Static). Elevations were established
using 3-Wire Leveling. Harris County FEMA
(TSARP) Benchmarks 210138 and 210140
were held for horizontal and vertical control.
Unit of Measure: U.S. Survey Foot.

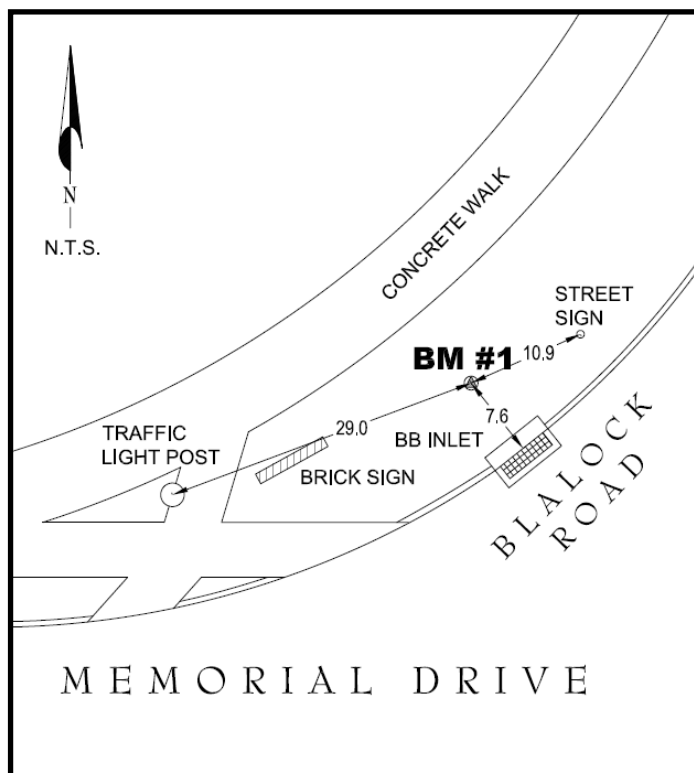


PHOTO 1 ~ STATION DETAIL



PHOTO 2 ~ STATION AREA PICTURE





CITY OF BUNKER HILL VILLAGE
BENCHMARK SHEET

BENCHMARK NO. 2

GENERAL LOCATION: NORTHWEST CORNER OF MEMORIAL DRIVE & BUNKER HILL ROAD

Latitude: 29° 45' 32.796" N
 Longitude: 95° 31' 47.748" W
 Grid Northing: 13,839,891.33
 Grid Easting: 3,069,330.01
 State Plane Coordinates, Texas South Central Zone (4204), NAD83.

ELEVATION: 73.40 NAVD88, 2001 Adj.

2" Brass Disk in Conc. Stamped "BM 2"
 Surveyed April, 2020 Probsfeld & Associates

Horizontal positions were established using GPS (Static). Elevations were established using 3-Wire Leveling. Harris County FEMA (TSARP) Benchmarks 210138 and 210140 were held for horizontal and vertical control. Unit of Measure: U.S. Survey Foot.

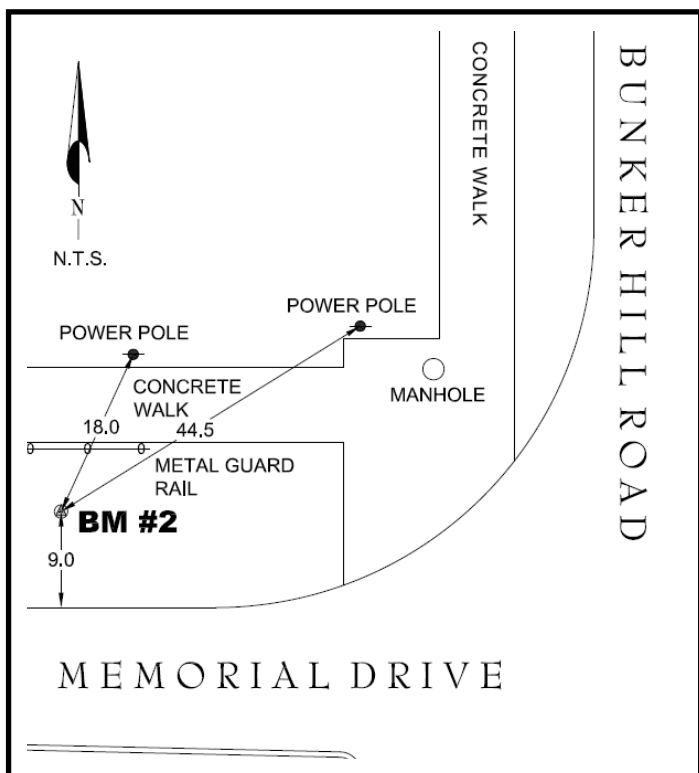


PHOTO 1 ~ STATION DETAIL



PHOTO 2 ~ STATION AREA PICTURE





CITY OF BUNKER HILL VILLAGE BENCHMARK SHEET

BENCHMARK NO. 3

GENERAL LOCATION: NORTH SIDE OF MEMORIAL DRIVE BRIDGE ~ BETWEEN PLANTATION ROAD & STREY LANE

Latitude: 29° 45' 48.363" N
 Longitude: 95° 32' 23.964" W
 Grid Northing: 13,841,393.50
 Grid Easting: 3,066,091.96
 State Plane Coordinates, Texas South Central Zone (4204), NAD83.

ELEVATION: 77.68 NAVD88, 2001 Adj.

2" Brass Disk in Conc. Stamped "BM 3"
 Surveyed April, 2020 Probstfeld & Associates

Horizontal positions were established using GPS (Static). Elevations were established using 3-Wire Leveling. Harris County FEMA (TSARP) Benchmarks 210138 and 210140 were held for horizontal and vertical control. Unit of Measure: U.S. Survey Foot.

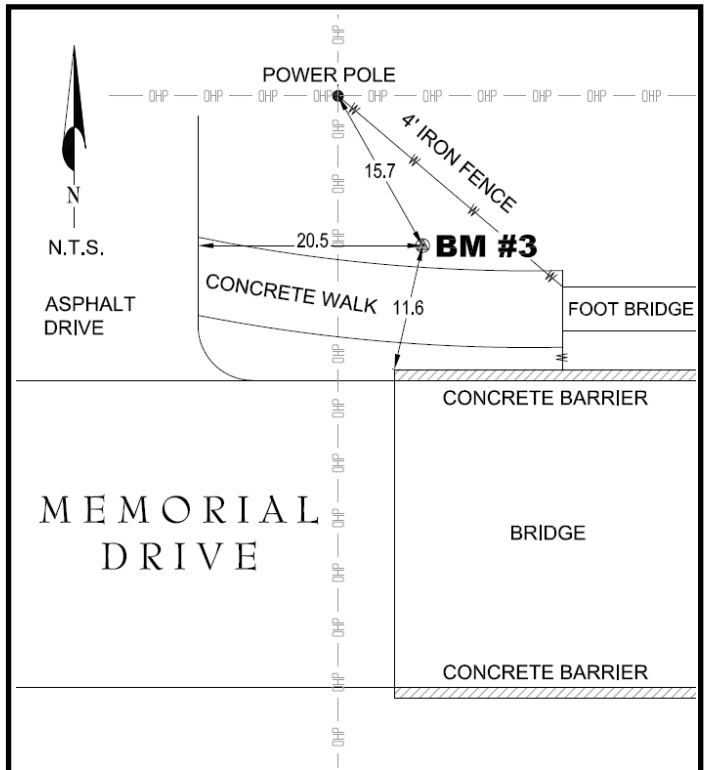


PHOTO 1 ~ STATION DETAIL



PHOTO 2 ~ STATION AREA PICTURE





CITY OF BUNKER HILL VILLAGE BENCHMARK SHEET

BENCHMARK NO. 4

GENERAL LOCATION: MEMORIAL DRIVE & HICKORY RIDGE COURT @ NORTHWEST CORNER

Latitude: 29° 45' 33.99708" N
Longitude: 95° 32' 16.82126" W
Grid Northing: 13,839,935.30
Grid Easting: 3,066,765.82
State Plane Coordinates, Texas South Central
Zone (4204), NAD83.

ELEVATION: 75.06 NAVD88, 2001 Adj.

2" Brass Disk in Conc. Stamped "BM 4"
Surveyed April, 2020 Probsfeld & Associates

Horizontal positions were established using
GPS (Static). Elevations were established
using 3-Wire Leveling. Harris County FEMA
(TSARP) Benchmarks 210138 and 210140
were held for horizontal and vertical control.
Unit of Measure: U.S. Survey Foot.

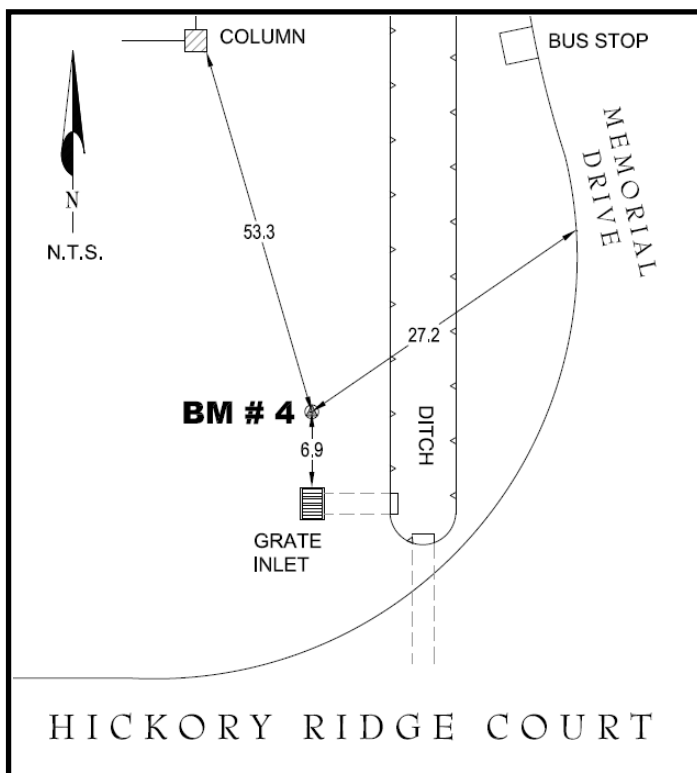


PHOTO 1 ~ STATION DETAIL



PHOTO 2 ~ STATION AREA PICTURE





CITY OF BUNKER HILL VILLAGE BENCHMARK SHEET

BENCHMARK NO. 5

GENERAL LOCATION: 11700 TAYLORCREST ROAD ~ IN FRONT OF WATER PLANT

Latitude: 29° 46' 23.988" N
Longitude: 95° 31' 27.912" W
Grid Northing: 13,845,109.98
Grid Easting: 3,070,925.58
State Plane Coordinates, Texas South Central
Zone (4204), NAD83.

ELEVATION: 76.07 NAVD88, 2001 Adj.

2" Brass Disk in Conc. Stamped "BM 5"
Surveyed April, 2020 Probstfeld & Associates

Horizontal positions were established using
GPS (Static). Elevations were established
using 3-Wire Leveling. Harris County FEMA
(TSARP) Benchmarks 210138 and 210140
were held for horizontal and vertical control.
Unit of Measure: U.S. Survey Foot.

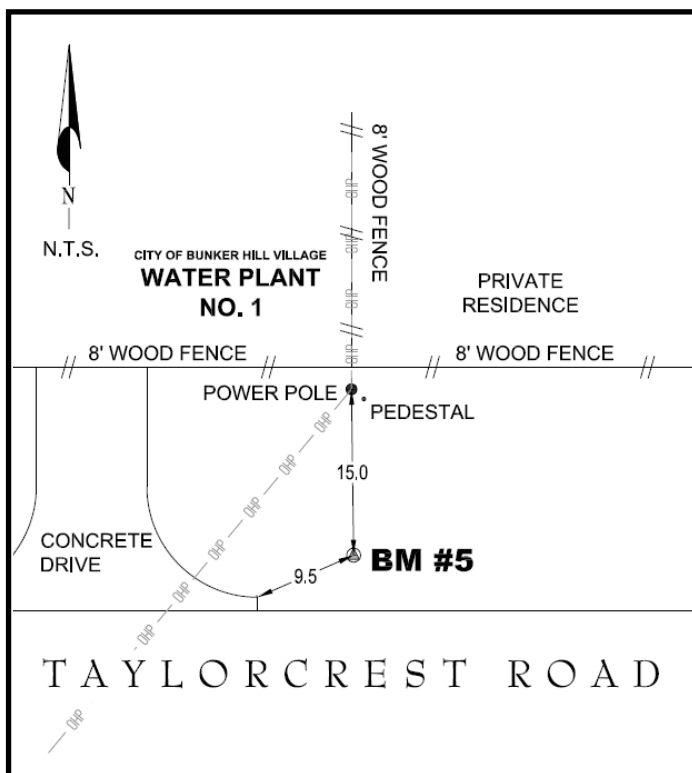


PHOTO 1 ~ STATION DETAIL



PHOTO 2 ~ STATION AREA PICTURE





CITY OF BUNKER HILL VILLAGE
BENCHMARK SHEET

BENCHMARK NO. 6

GENERAL LOCATION: SOUTHEAST CORNER OF TEALWOOD NORTH DRIVE @ MEMORIAL DRIVE

Latitude: 29° 45' 54.360" N
 Longitude: 95° 32' 45.420" W
 Grid Northing: 13,841,915.19
 Grid Easting: 3,064,186.16
 State Plane Coordinates, Texas South Central Zone (4204), NAD83.

ELEVATION: 75.69 NAVD88, 2001 Adj.

2" Brass Disk in Conc. Stamped "BM 6"
 Surveyed April, 2020 Probsfeld & Associates

Horizontal positions were established using GPS (Static). Elevations were established using 3-Wire Leveling. Harris County FEMA (TSARP) Benchmarks 210138 and 210140 were held for horizontal and vertical control. Unit of Measure: U.S. Survey Foot.

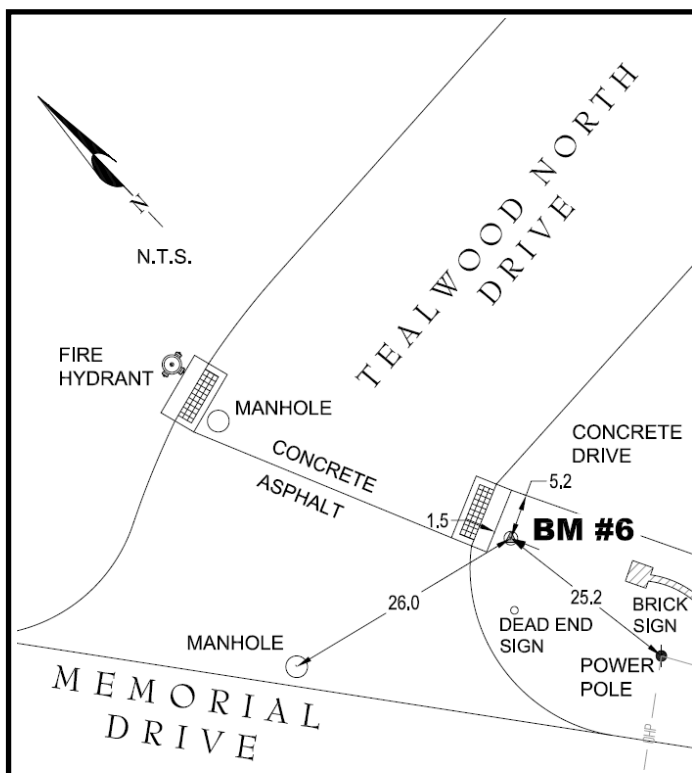


PHOTO 1 ~ STATION DETAIL



PHOTO 2 ~ STATION AREA PICTURE





CITY OF BUNKER HILL VILLAGE
BENCHMARK SHEET

BENCHMARK NO. 7

GENERAL LOCATION: "CITY HALL BENCHMARK" ~ 11977 MEMORIAL DRIVE IN FRONT OF MEMORIAL VILLAGES POLICE STATION & ADJACENT TO BUNKER HILL VILLAGE CITY HALL

Latitude: 29° 45' 43.779" N
 Longitude: 95° 32' 16.964" W
 Grid Northing: 13,840,922.59
 Grid Easting: 3,066,724.04
 State Plane Coordinates, Texas South Central Zone (4204), NAD83.

ELEVATION: 75.73 NAVD88, 2001 ADJ.

2" Brass Disk in Conc.
 Surveyed April, 2020 Probstfeld & Associates

Horizontal positions were established using GPS (Static). Elevations were established using 3-Wire Leveling. Harris County FEMA (TSARP) Benchmarks 210138 and 210140 were held for horizontal and vertical control. Unit of Measure: U.S. Survey Foot.

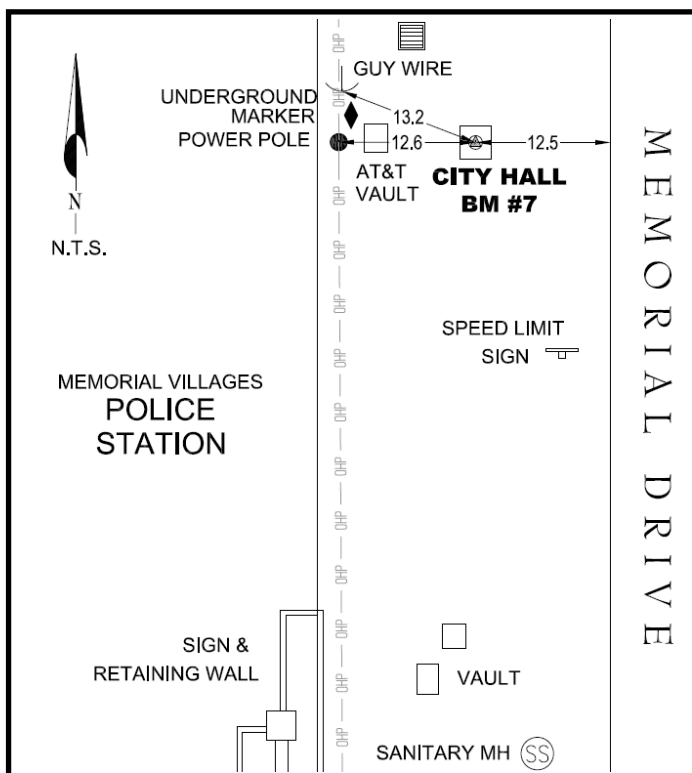


PHOTO 1 ~ STATION DETAIL



PHOTO 2 ~ STATION AREA PICTURE

